

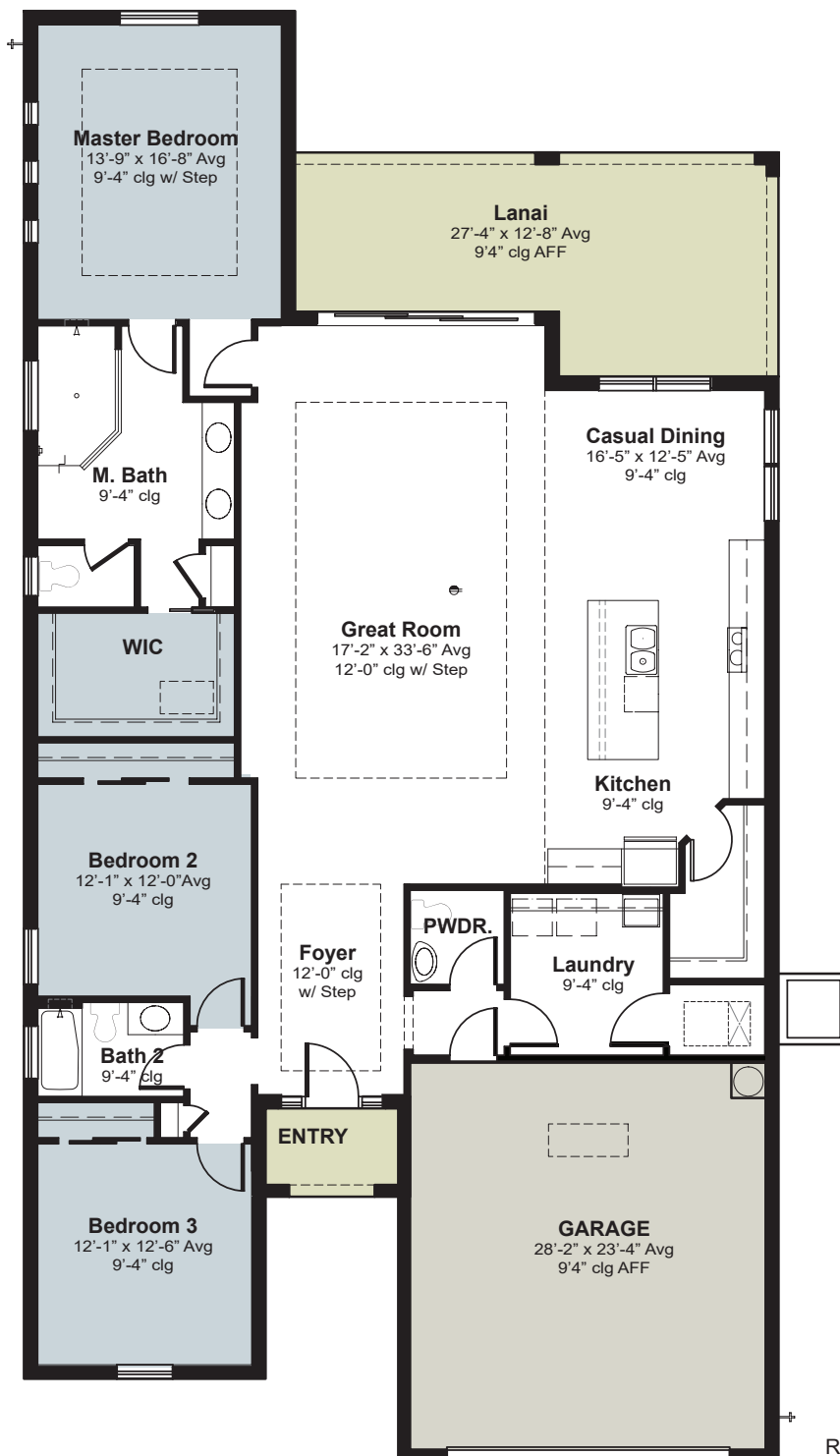
ANNA MARIA

2,290 SQ. FT. LIVING AREA



3 BEDROOMS | 2.5 BATHS | 2-CAR GARAGE

AREA	SQ. FT.
Living AC	2,290
Entry	38
Lanai	292
Garage	485
TOTAL	3,105



REVISED 12/2020

Elevations and floor plans are for conceptual purposes, and may not reflect actual characteristics of the finished home. Sam Rodgers Homes reserves the right to modify pricing, plans and specifications without notice. All dimensions are approximate. Some items depicted may be optional. CBC056962

